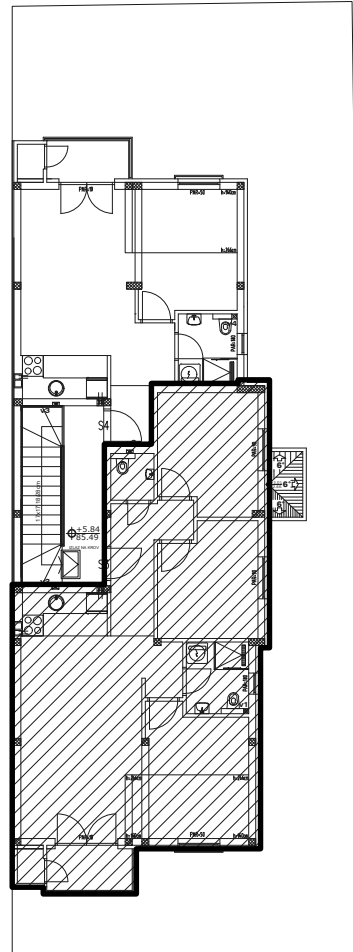
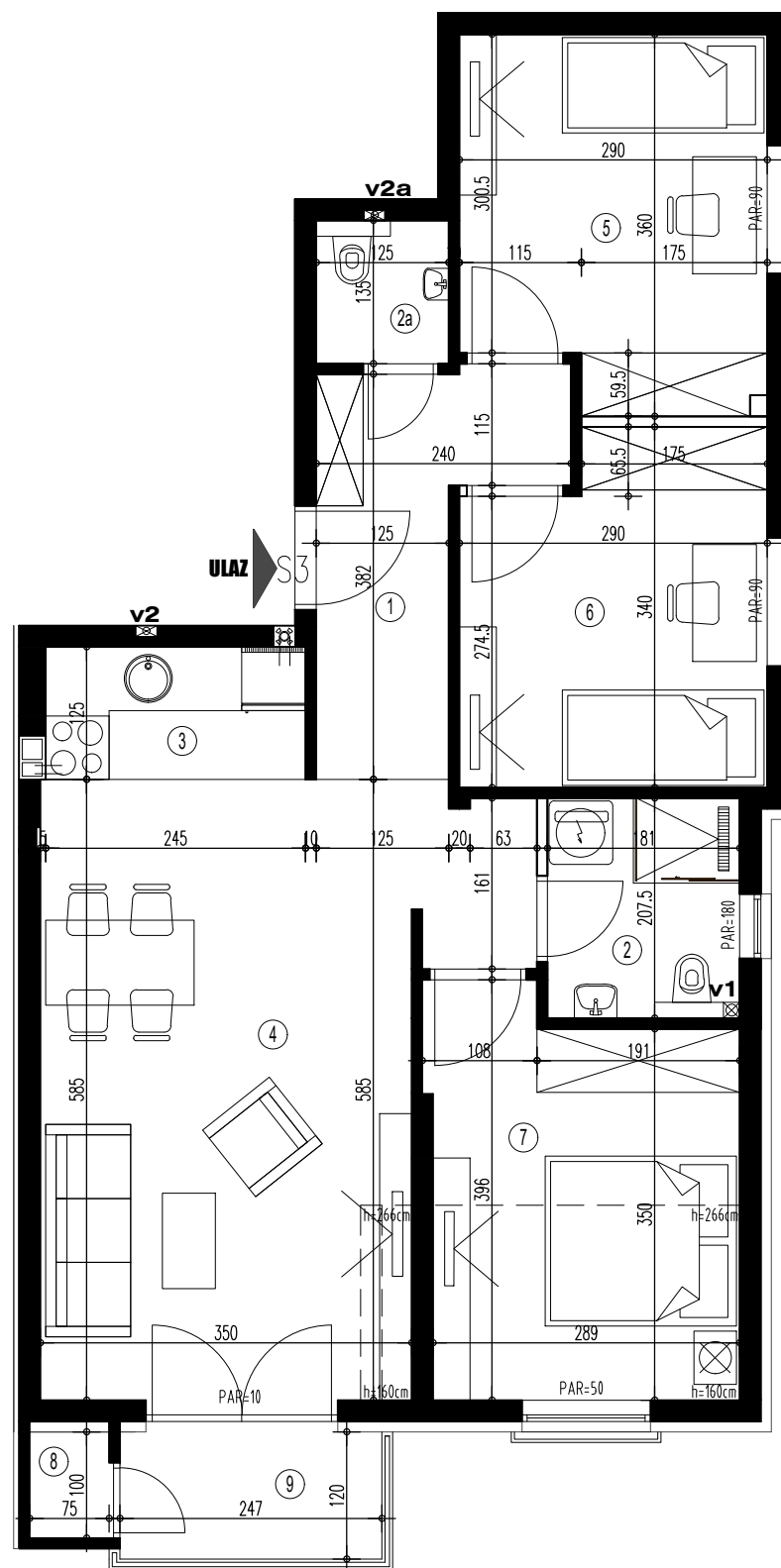


## SITUACIJA



Ulica Jovana Ristića

## STAN 3 - troiposoban



## POTKROVLJE

### S3 - troiposoban

BR.	NAZIV PROSTORIJE	VRSTA PODA	POVRŠINA PODA	KOEF.	KORISNA POVRŠINA
1	Ulaz	parket	6.08 m <sup>2</sup>	1.00	6.08 m <sup>2</sup>
2	Kupatilo	ker. pločice	3.73 m <sup>2</sup>	1.00	3.73 m <sup>2</sup>
2a	WC	ker. pločice	1.68 m <sup>2</sup>	1.00	1.68 m <sup>2</sup>
3	Kuhinja	ker. pločice	3.06 m <sup>2</sup>	1.00	3.06 m <sup>2</sup>
4	Dnevna soba	parket	22.61 m <sup>2</sup>	1.00	22.61 m <sup>2</sup>
5	Soba	parket	9.72 m <sup>2</sup>	1.00	9.72 m <sup>2</sup>
6	Soba	parket	9.10 m <sup>2</sup>	1.00	9.10 m <sup>2</sup>
7	Soba	parket	10.67 m <sup>2</sup>	1.00	10.67 m <sup>2</sup>
8	Ostava	ker. pločice	0.75 m <sup>2</sup>	1.00	0.75 m <sup>2</sup>
9	Terasa	ker. pločice	3.14 m <sup>2</sup>	1.00	3.14 m <sup>2</sup>
UKUPNO:					70.54 m <sup>2</sup>
komercijalna površina				k-0,97:	68.42 m <sup>2</sup>

BROJ UGOVORA

kontakt tel.